

**Swann Technical Support**

All Countries E-mail: [tech@swann.com.au](mailto:tech@swann.com.au)

**Telephone Helpdesk**

UNITED STATES toll free

877-274-3695

(Sun-Thurs, 2pm-10.30pm PST)

800-627-2799

(Mon-Fri, 9am-1pm PST)

USA Exchange & Repairs

562-777-2551

(Mon-Fri, 9am-5pm PST)

AUSTRALIA toll free

1300 13 8324

(Mon-Fri, 9am-5.30pm Aus EST)

International

+61 3 8412 4610

(Mon-Fri, 9am-5.30pm Aus EST)

See <http://www.worldtimeserver.com> for information on different time zones and the time in Melbourne Australia compare to your local time.

**Warranty Information**

Swann warrants this product against defects in workmanship and material for a period of one (1) year from it's original purchase date. You must present your receipt as proof of date of purchase for warranty validation. Any unit which proves defective during the stated period will be repaired without charge for parts or labour or replaced at the sole discretion of Swann. The repair or replacement will be warranted for either ninety days or the remainder of the original one year warranty period, whichever is longer. The end user is responsible for all freight charges incurred to send the product to Swann's repair centres. The end user is responsible for all shipping costs incurred when shipping from and to any country other than the country of origin. The warranty does not cover any incidental, accidental or consequential damages arising from the use of or the inability to use this product. Any costs associated with the fitting or removal of this product by a tradesman or other person or any other costs associated with its use are the responsibility of the end user. This warranty applies to the original purchaser of the product only and is not transferrable to any third party.

Unauthorised end user or third party modifications to any component or evidence of misuse or abuse of the device will render all warranties void.



# Memory Camera Series

*With motion detection capturing*



**Swann** Helpdesk  
Has the answers



**If this device does not work when you first plug it in, do not take it back to the store.**

✓ Contact the Swann Helpdesk using our fast e-mail service [tech@swann.com.au](mailto:tech@swann.com.au) or call us on one of the Toll-Free numbers shown on the back cover of this booklet.

✓ Most problems can be quickly and easily fixed with a simple e-mail or a quick chat with one of our friendly technical staff. (Toll-Free available in the US and Australia only)

**FCC NOTICE**

This device complies with Part 15 of FCC Rules.

Operation is subject to the following conditions:

- (1) This device may not cause harmful interference, and
- (2) this device must accept any interference received, including interference that may cause undesired operation

## Installation Guide

## Contents

Introduction	2
Parts Identification	2
Getting Started	3
PIR Camera	3
PC Webcam	4
PC Webcam continued	5
Saving images to your PC	6
Saving images to your PC continued	7
Help Desk / Support Details	Back Cover
Warranty Information	Back Cover

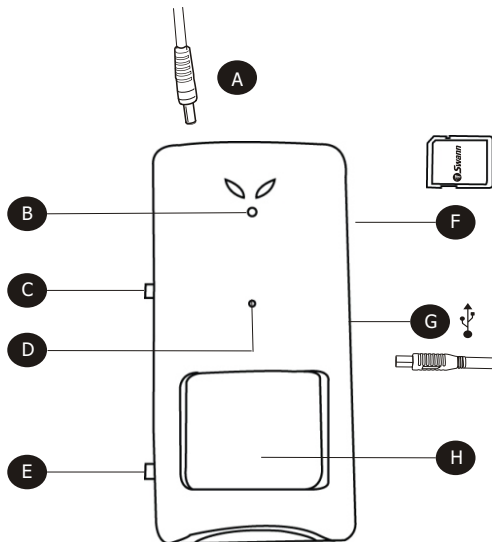
## Introduction

The Swann Memory Camera is designed for use as a PC webcam or imitation Passive Infra-Red (PIR) sensor that captures still images into a Secure Digital (SD) memory card. This camera must be used indoors and ideally situated in a high area of a room. The SD PIR camera can be used for a variety of purposes including monitoring your property or staff, and catching criminals.

Please Note: The mini CD supplied can only work with CD ROMs which have a mini CD tray.

## Parts Identification

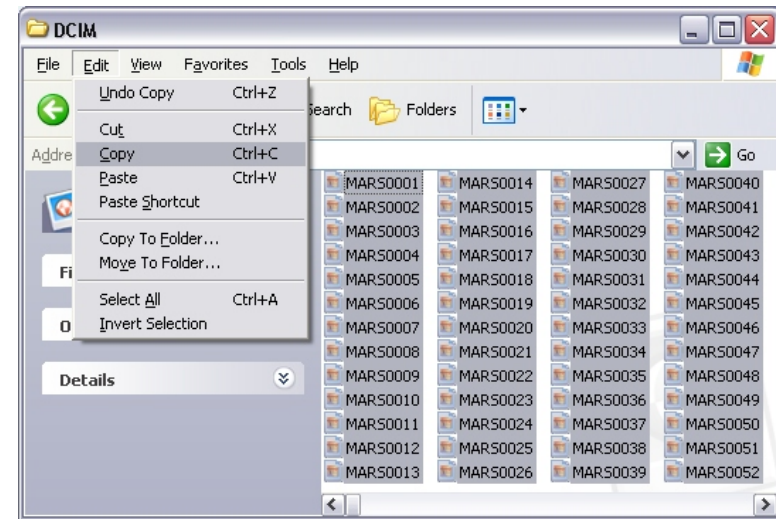
- A. DC power input
- B. LED indicator (lights up when capturing a picture)
- C. Shutter button
- D. Pinhole Lens
- E. PIR ON/OFF switch
- F. SD Memory Card slot
- G. Mini USB port
- H. PIR Sensor and filter



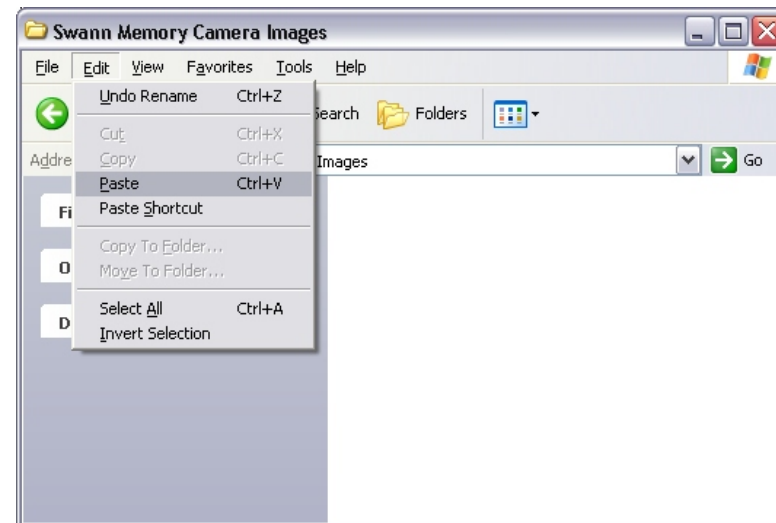
## Saving Images to your PC continued

**Step 5:** Highlight the images you want to save to your computer. You can select all images by clicking on the Edit tab and clicking on "Select All Ctrl+A".

**Step 6:** Click on the Edit tab and select "Copy Ctrl+C". See below.



**Step 7:** Go to the location of where you want to save the file/s to and click on the Edit tab and then select "Paste Ctrl+V". See below.



**Step 8:** When finished, you will see all of your file/s in your target folder. Double click on the file/s to view the images.

## Saving Images to your PC

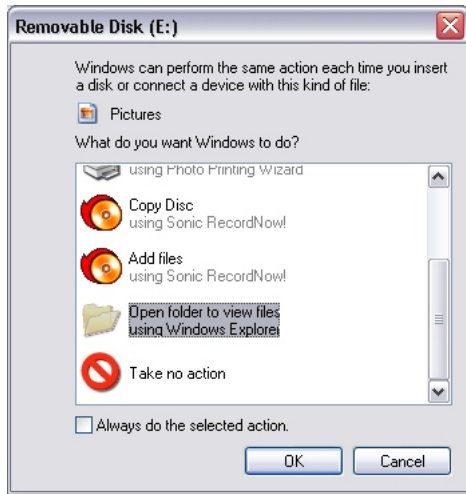
**Saving images from the SD memory card to your PC. Please refer to illustrations on page 4.**

*Important: Make sure the PIR ON/OFF switch (3) on the left of the camera is in the OFF position.*

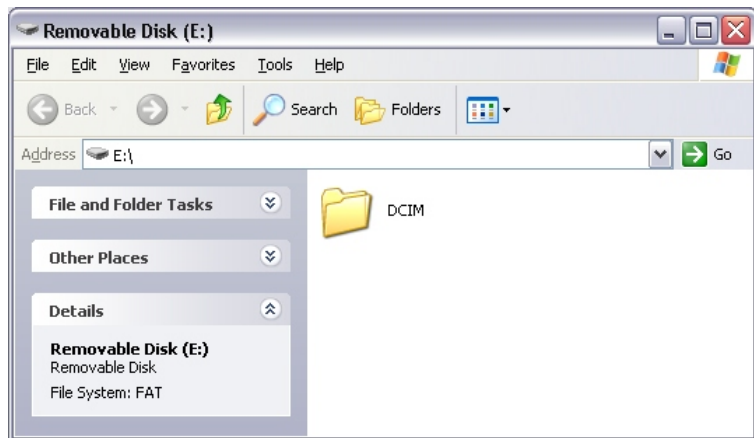
**Step 1:** Connect the USB A plug (1) into a spare USB port (2) on your computer.

**Step 2:** Connect the USB B plug (5) into the USB port (6) on the right side of the PIR camera.

**Step 3:** Windows will prompt you with a "What do you want Windows to do?" Dialog box for your removable disk. Please select the "Open folder to view files" option.



**Step 4:** The screen below should appear. Now double click on the "DCIM" folder to view the images taken by the camera.



## Getting Started

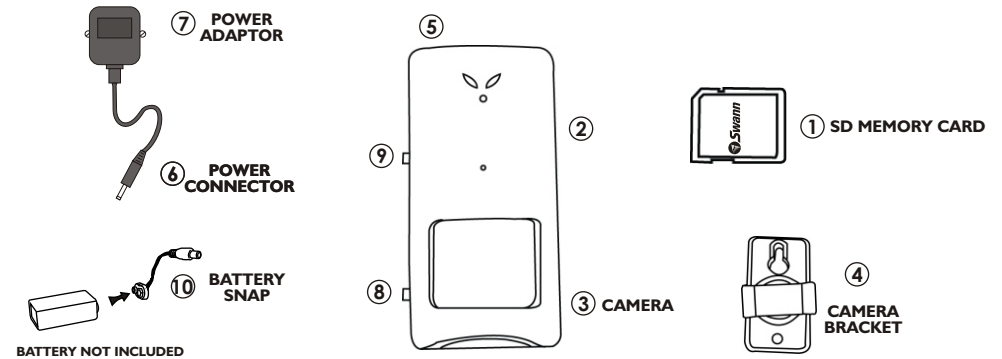
You can connect your Swann Memory camera to your PC and use the camera as a PC webcam or extract the images already saved on the SD memory card in the camera. To help guide you through the process of setting up the camera, we have outlined the steps and numbered each of the components required in the diagram below each of the configurations.

### Important!

The SD card can only be inserted one way (gold pins facing towards the back of the camera), forcing it may damage the camera or SD card.

Make sure you turn OFF the power to the camera before inserting or removing the SD card. Do not insert or remove the card when the LED is blinking. This can result in damage to the picture or the SD card.

## PIR Camera



*Important: Make sure the PIR ON/OFF switch (8) on the left of the camera is in the OFF position.*

**Step 1:** Firstly insert your SD memory card (1) into the SD card slot (2) on the camera.

**Step 2:** Choose where you want to situate the camera. Keep in mind the camera can only be 3ft / 1m away from a mains power socket, unless you use extension cables. Then mount the camera bracket to your wall using the screws provided in the packaging.

**Step 3:** Connect the camera (3) to the camera bracket (4) mounted on your wall.

**Step 4:** Connect the DC plug (6) into the DC power socket (5) on the top of the camera.

**Step 5:** Plug the power adaptor (7) into the mains power on your wall.

*For short term usage, connect a 9V battery to the Battery Snap (10) and plug it into the DC power socket (5).*

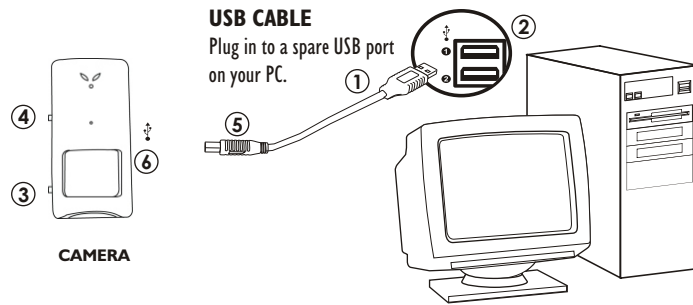
**Step 6:** Make sure you wait 30 seconds while the camera goes through diagnostics before you push the PIR ON/OFF switch (8) on the left of the camera into the ON position.

**Step 7:** The camera will now take images of any motion events within 15 feet (5 metres) of the camera every 3 seconds. All images will be saved to the default location on the SD memory card.

**Step 8:** Press the shutter button (9) on the left of the camera to manually save images to your SD memory card.

## PC Webcam

To connect the camera to your PC and use the camera as a PC webcam or save the images to your computer, please refer to the image below.



### Using the SD PIR cam as a PC camera.

Important: Make sure the PIR ON/OFF switch (3) on the left of the camera is in the OFF position.

**Step 1:** Firstly install the software on your pc by running the setup.exe file found on the CD.

**Step 2:** Then connect the USB A plug (1) into a spare USB port (2) on your computer.

**Step 3:** Make sure the PIR ON/OFF switch (3) on the left of the camera is in the ON position.

**Step 4:** Hold down on the shutter button (4) before you connect the USB B plug (5) into the USB port (6) on the right side of the PIR camera.

**Step 5:** Your system should detect your camera and a "Found new hardware wizard" will start. Select "Install the software automatically", and click next. Now you will receive a message that the software for the device you are installing has not passed "Windows Logo testing to verify its compatibility with Windows XP". You must click "Continue Anyway" to complete the installation. When your system has completed the installation, you will see a message telling you that the wizard has completed installing the software. Click "finish" to close the wizard.

Note: If you do not get the found new hardware wizard, you should disconnect the USB cable from the side of the camera and check if the PIR ON/OFF switch is in the ON position. Also check if the camera is listed as a "MR97316 VGA Dual-Mode Camera" in the Imaging Devices category of your Device Manager.

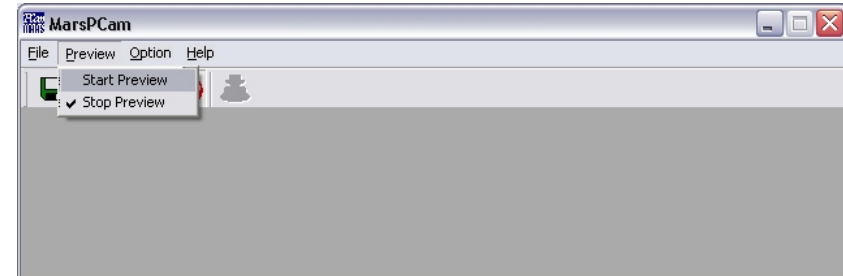
**Step 6:** Run the MR97316 MarsPCam file found on your desktop. The screen below should appear.



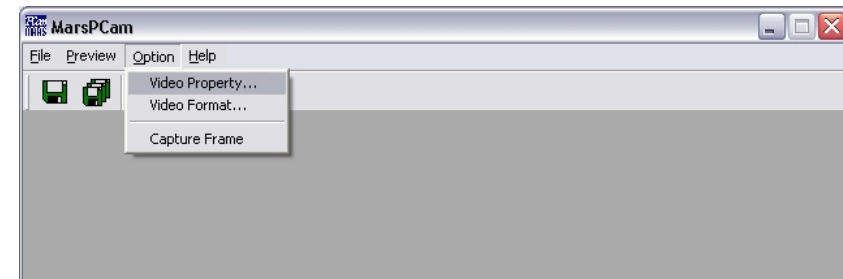
## PC Webcam continued

**Step 7:** Press the button to start previewing from the camera. Otherwise click on "Start Preview" from the Preview tab menu.

**Step 8:** Press the button to stop previewing from the camera. Otherwise click on "Stop Preview" from the Preview tab menu.



**Step 9:** Press the button to capture the image from the camera. Otherwise click on "Capture Frame" from the Option tab menu.



**Step 10:** Press the button to save the last captured image. Otherwise click on "Save Active Item" from the File tab menu. In the next screen, select the location of where you want to save the captured "jpeg" image.

**Step 11:** Press the button to save all captured images. Otherwise click on "Save All Items" from the File tab menu. In the next screen, select the location of where you want to save the captured "jpeg" images.



**Step 12:** Click on the "About MarsPCam" from the Help tab menu to find the version number of the MarsPCam software.